



# HÔTEL ESENCIA

*CHÂTEAU DE CURZAY*







# CHÂTEAU DE CURZAY

Hotel Esencia's new outpost in the heart of the French Poitou region - Château de Curzay, a glorious 18th century architectural gem once known as the 'Petit Versailles'. The charming castle is set on a 350 acre estate, in Curzay sur Vonne, surrounded by a deep, thick forest, and the river Vonne running through it.

The estate has been the residence of different aristocratic families throughout history, from the medieval buildings constructed in the 12th century, to the conception and construction of the castle by La Marquise de L'Hôpital in 1710, to the acquisition and renovation in 1783 by the Viscounts of Curzay, remaining in the same family until 1991, with a dramatic occupation during WWII.











# TRAVEL

## BY TRAIN

Château de Curzay is easily accessible from Paris by TGV, a short 1:20 ride to Poitiers station from Montparnasse station.

## BY AIR

For those who wish to arrive by plane, Poitiers Biard airport is 30 mins. from the Château by car.

## BY CAR

Curzay sur Vonne is 5 minutes from the A10 Paris-Bordeaux auto-route.





## THE CASTLE LIFE

After a 4-year renovation, Château de Curzay is ready to re-open its doors, and welcome discerning travelers who like to slow down, reconnect with nature, and enjoy French countryside living; an ideal place for friends and families to gather together.

The lovingly and artfully designed interiors and landscape were reimagined with a nod to the castle's majestic past, to include the utmost comforts of modern life, creating a private, tranquil and sophisticated atmosphere.











# YOUR STAY

## EXCLUSIVE USE

Guests may enjoy the entire estate exclusively.

## ACCOMMODATION

Up to 12 guests in five bedrooms with ensuite bathrooms. All rooms feature one queen bed, 2 of which include one single sofa/bed extra.

## STAFF

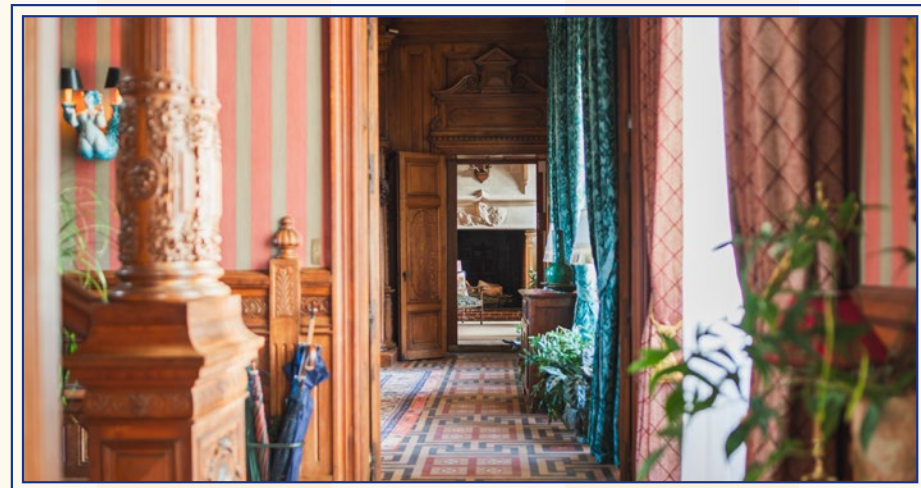
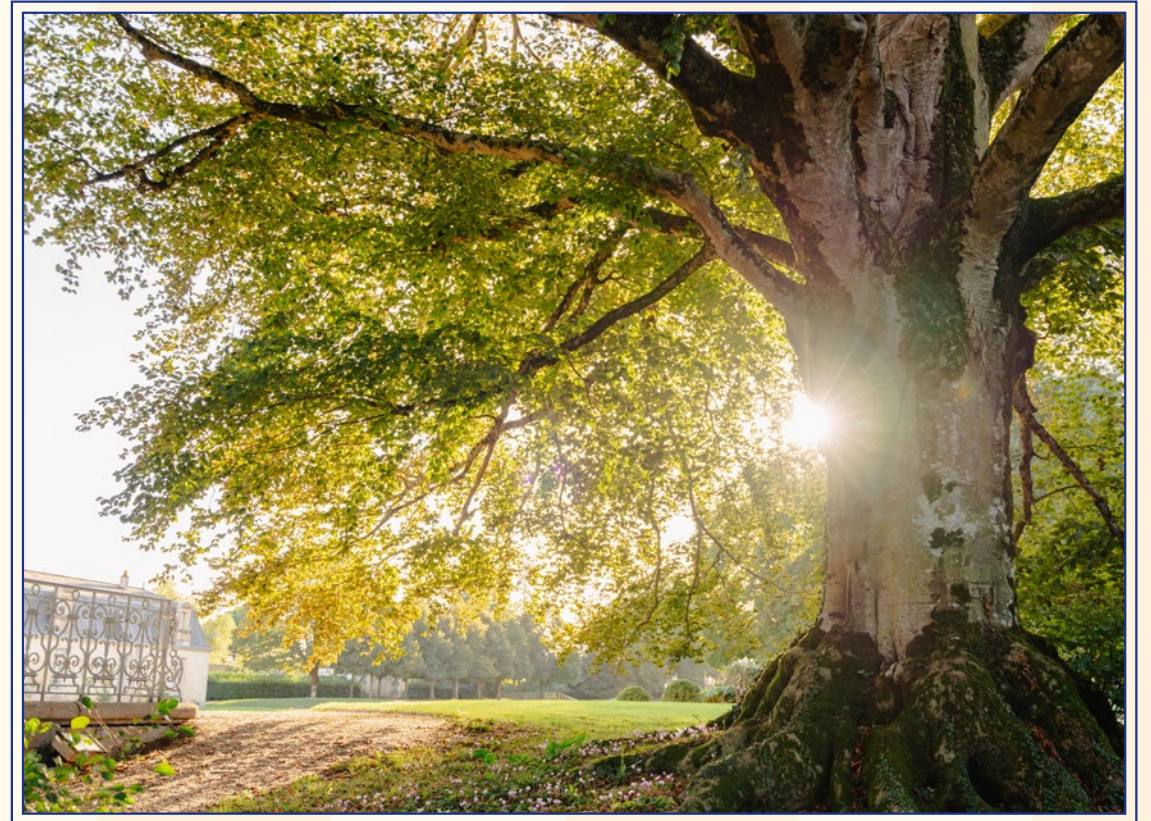
Private 24h butler - English/French speaking

Daily housekeeping + night turndown service

## MEALS

Upon request, a private chef can prepare all meals based on guests' personal preferences.

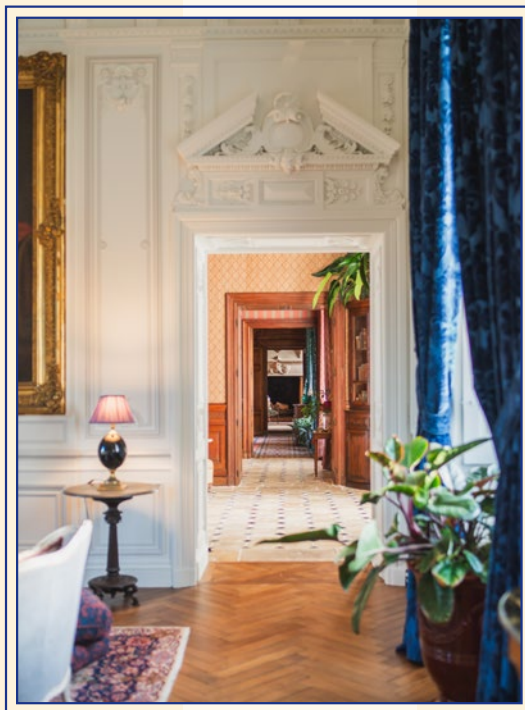
Local dining options can also be suggested and arranged by the private butler.









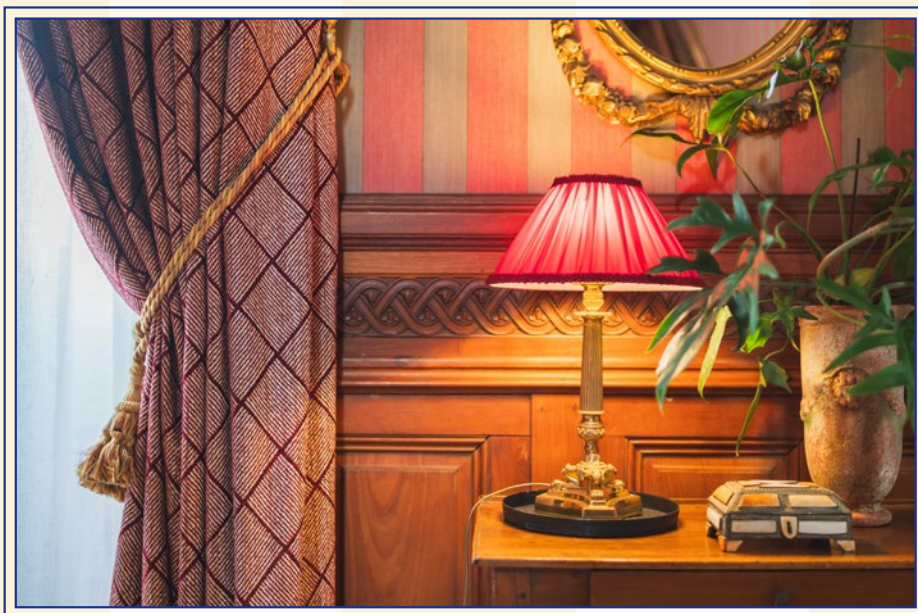


# PLEASE COME IN

Coming in through the foyer, a warm and welcoming prelude to the sprawling ground floor. The 'Grand Salon' with its exquisite Neo-renaissance sculpted plaster ceiling and wood paneling, the imposing marble fireplace and mantelpiece, offers a relaxed sumptuous atmosphere; guests can relax and bask in the history of the room.

Adjacent to the Grand salon are the 'Petit Salon' with its charming wet bar and working fireplace - a room made for conversation; and the library, a magical cabinet of curiosities showcasing hundreds of books, magazines and objects for guests to admire.

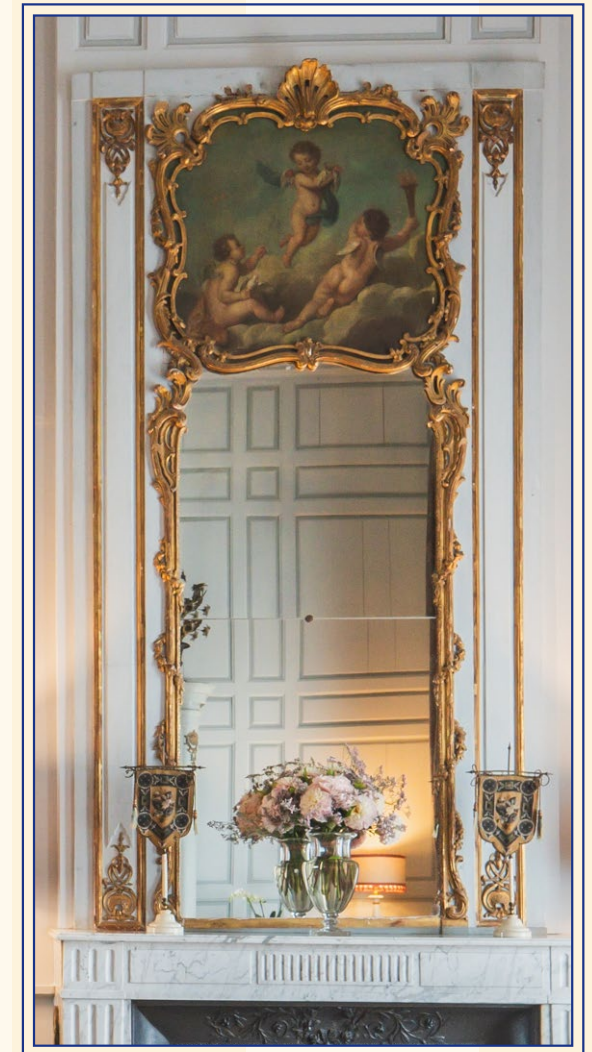
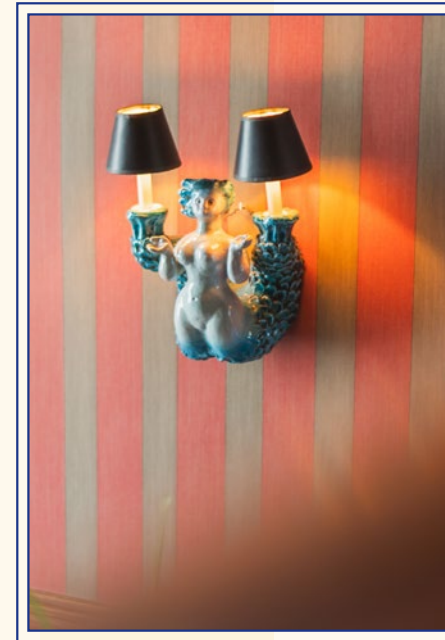
In the south wing of the ground floor, the dining room houses a stunning monastery style table for 12, and original Louis XIII style intricately-carved china cabinets. Adjacent to the dining room, are the sunny breakfast room, an inviting space with a touch of whimsy; and the game room with its grandiose fireplace, billiards table, poker table and board games.





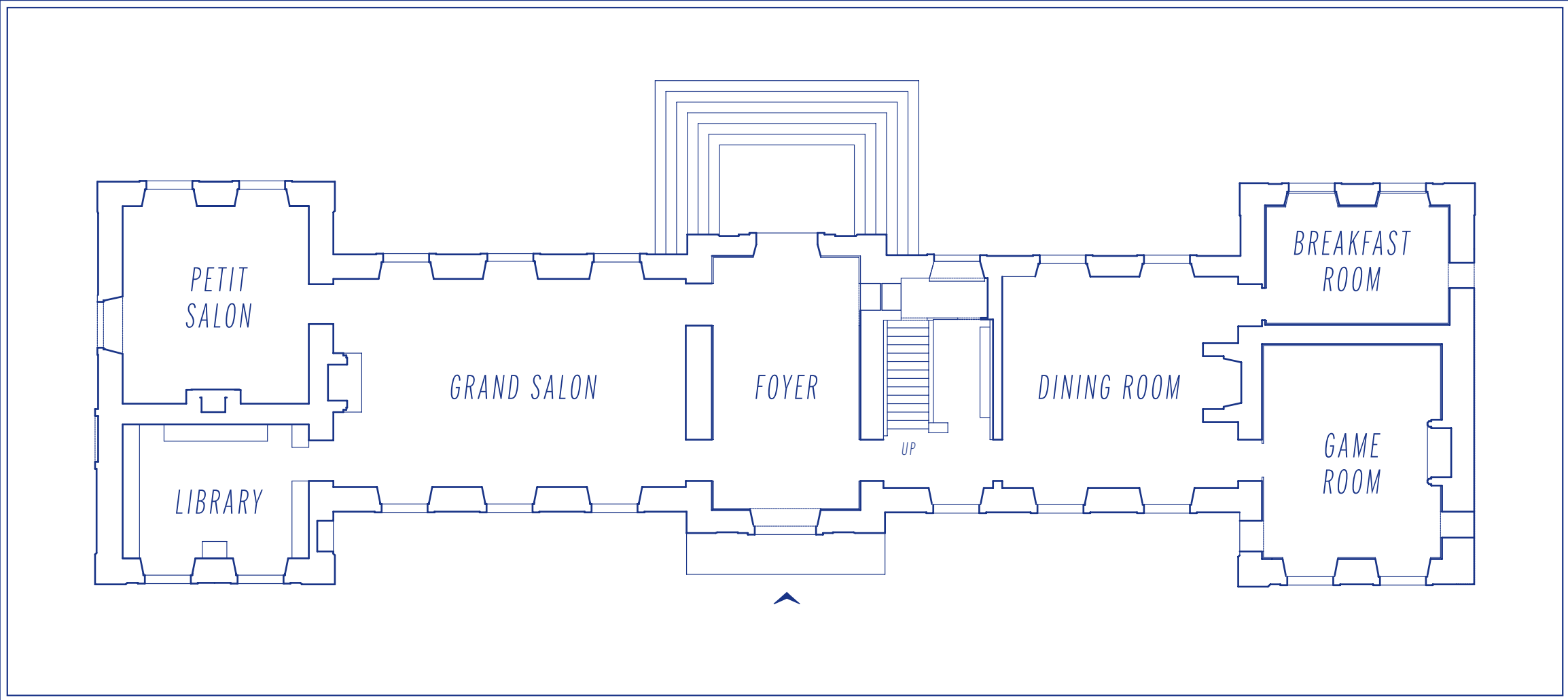
# A TREASURE COLLECTION

The Château is sprinkled with treasures ranging from original 18th century art pieces, to antiques and furnishings collected by the owner coming from many corners of the world, including pieces by Serge Roche, Adenay, Picasso, and Georges Jouve.

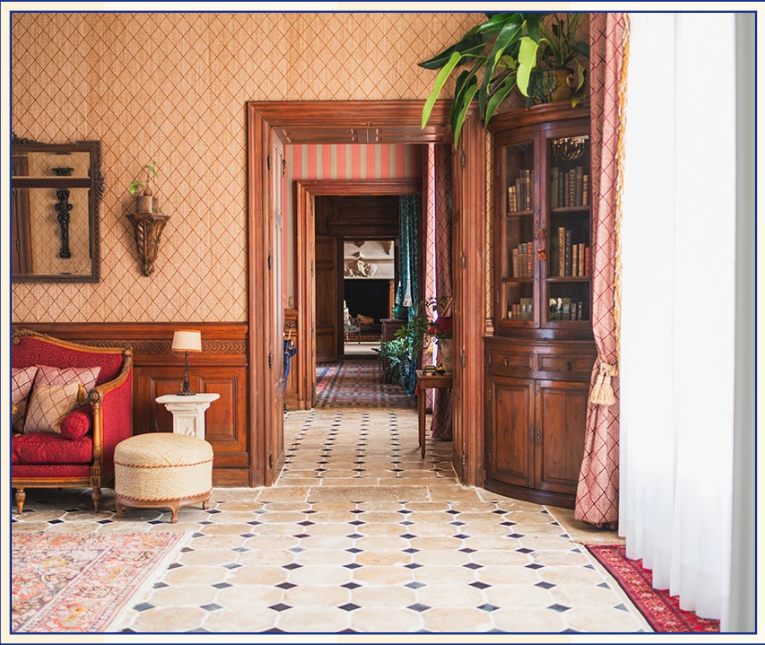




# THE GROUND FLOOR





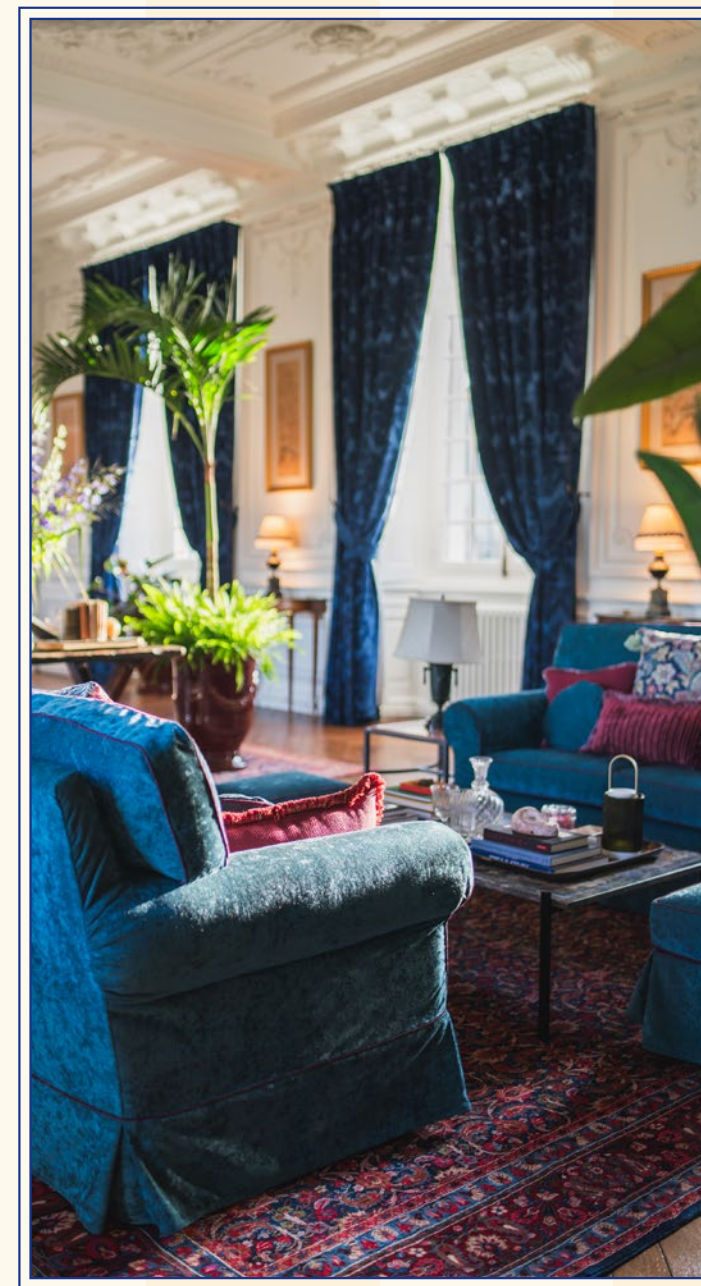


*HALL D'ENTRÉE*  
THE FOYER





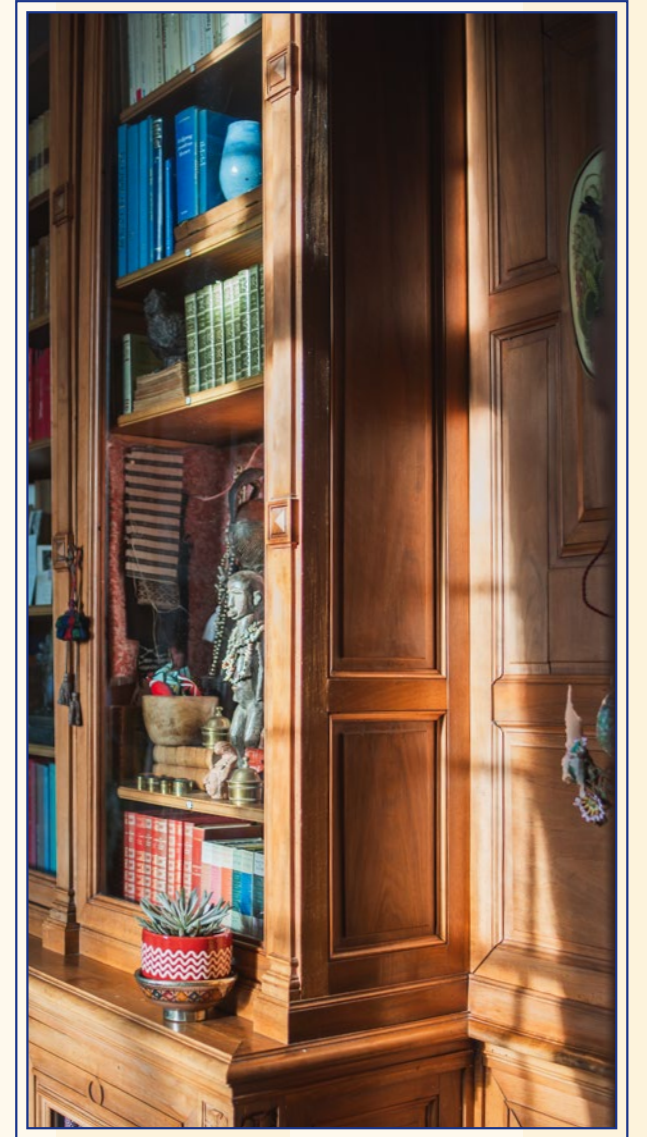
*LE GRAND SALON*  
THE GRAND LIVING ROOM







LA BIBLIOTHÈQUE  
THE LIBRARY







*LE PETIT SALON*  
SITTING ROOM AND BAR





LA SALLE À MANGER  
THE DINING ROOM







*LA SALLE DE PETIT-DÉJEUNER*  
THE BREAKFAST ROOM



*LA TERRASSE*  
DINING TERRACE







*LA TERRASSE*  
DINING TERRACE



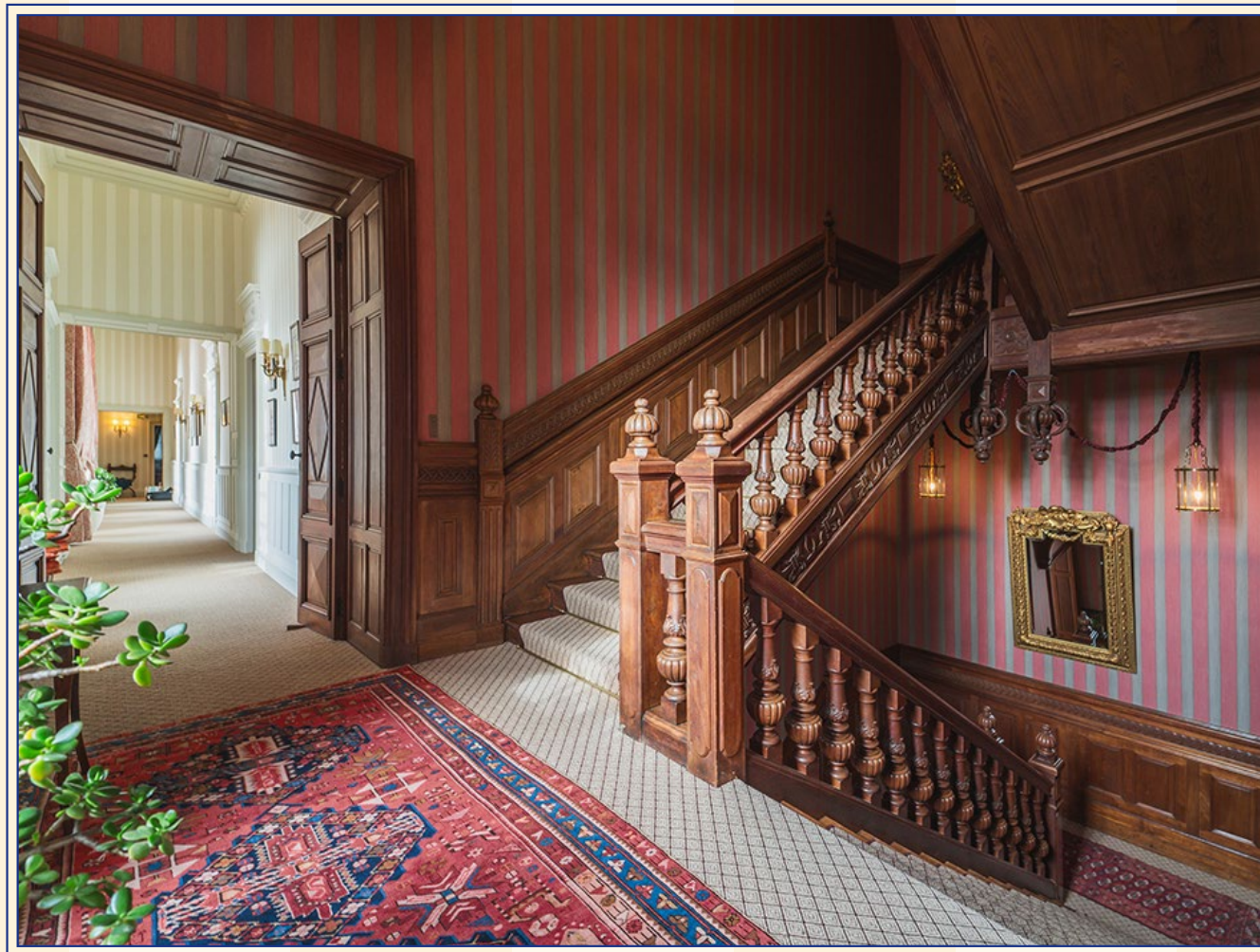
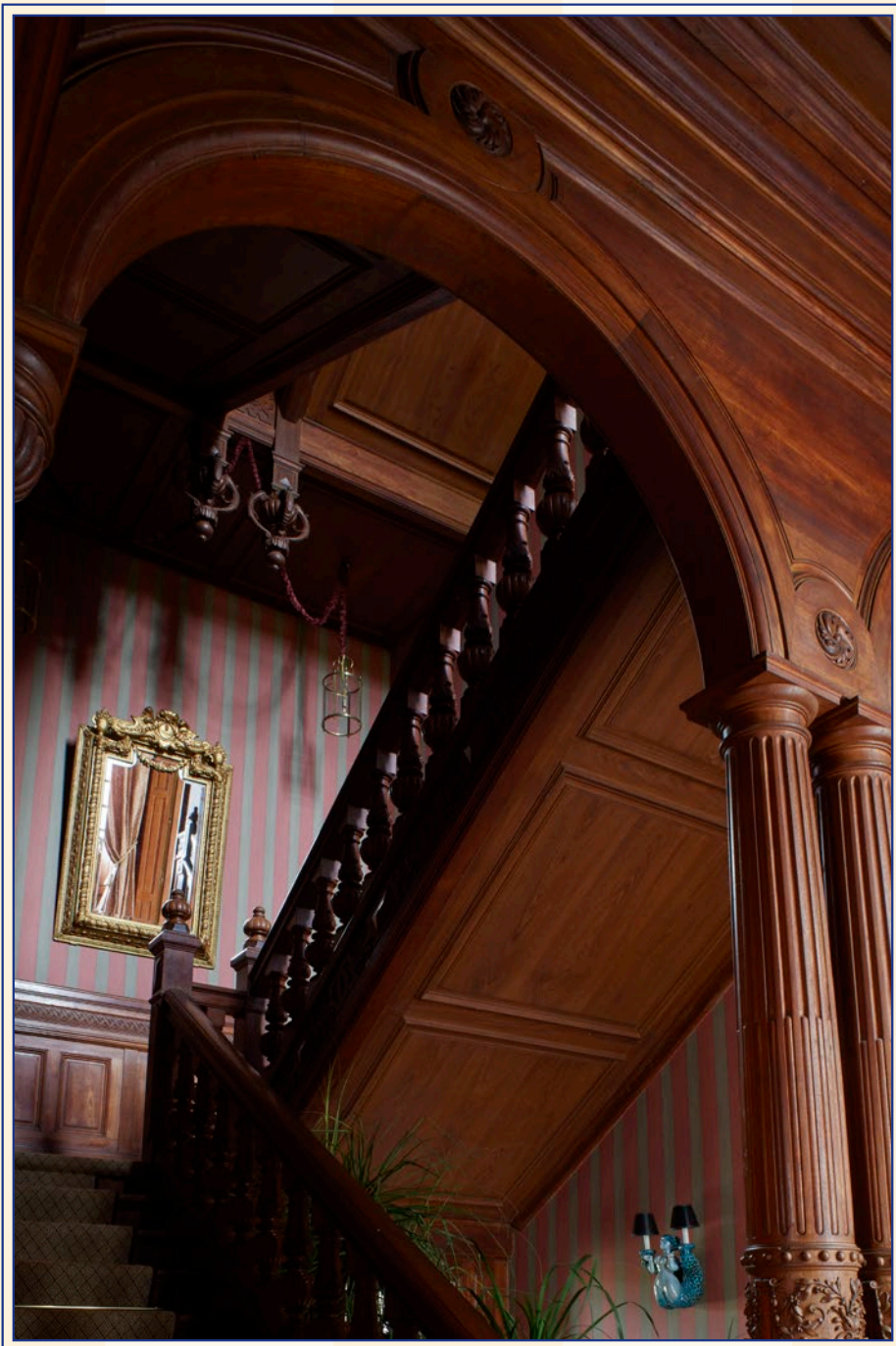


*LA SALLE DE JEUX*  
THE GAME ROOM





*L'ESCALIER*  
THE GRAND STAIRCASE











# PIANO NOBILE

Up the grand staircase, which preserves original carved sculptings, is the 'piano nobile' or the royal floor, hosting the five exquisitely decorated bedrooms.

Sleeping a total of 12 guests, the bedrooms, with ensuite bathrooms, were uniquely designed to the last detail, to bring out the allure of the original spaces, accentuated by a curated collection of lavish fabrics, furniture, rugs, and exquisite lighting.

Each room offers a view over the vast meadows of the east side of the estate.

The light-drenched grand hallway connecting the north and south wings of the royal floor overlooks the front courtyard and the tree-lined cavalier's alley, stretching as far as the eye can see.





# THE FIRST FLOOR

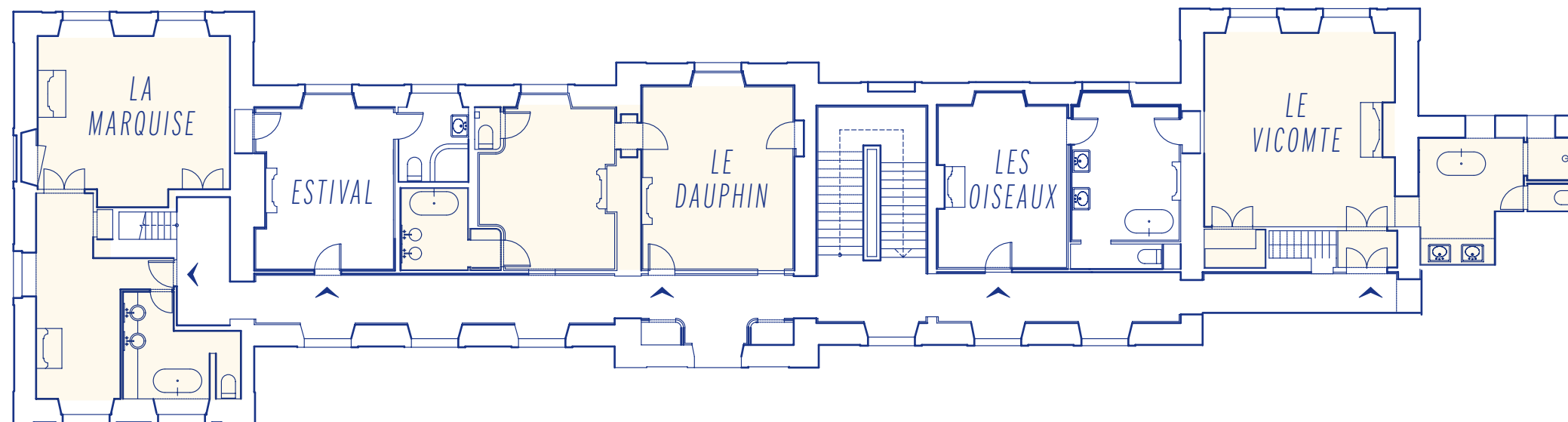
*LA MARQUISE: Sleeps 3*

*LES OISEAUX: Sleeps 2*

*ESTIVAL: Sleeps 2*

*LE VICOMTE: Sleeps 2*

*LE DAUPHIN: Sleeps 3*







LA  
MARQUISE  
SALON





LA  
MARQUISE  
BEDROOM





ESTIVAL







LE DAUPHIN





LE DAUPHIN







*LES OISEAUX*





*LES OISEAUX*  
BATHROOM





LE VICOMTE





*LE VICOMTE*







*LE VICOMTE*  
BATHROOM





# OUT AND ABOUT

The Château estate offers every opportunity for relaxation and contemplation, nonetheless a leisurely stay can be complemented with more animated activities such as a tennis match, on the competition-grade tennis court surrounded by centuries-old cedar trees and just a one minute walk from the Château.

Visit the property's vegetable and orchard garden to pick seasonal fresh produce; dip in the pool and lounge under the sun while sipping a cocktail; take a long and adventurous walk through footpaths in the woods amid the towering trees, or kayak through the estate on the river Vonne.

For the lovers of equestrian activities, a horse-back promenade can be arranged. The butler can also arrange local tours and visits, golfing sessions, cooking lessons, and spa services in the comfort of your own room.



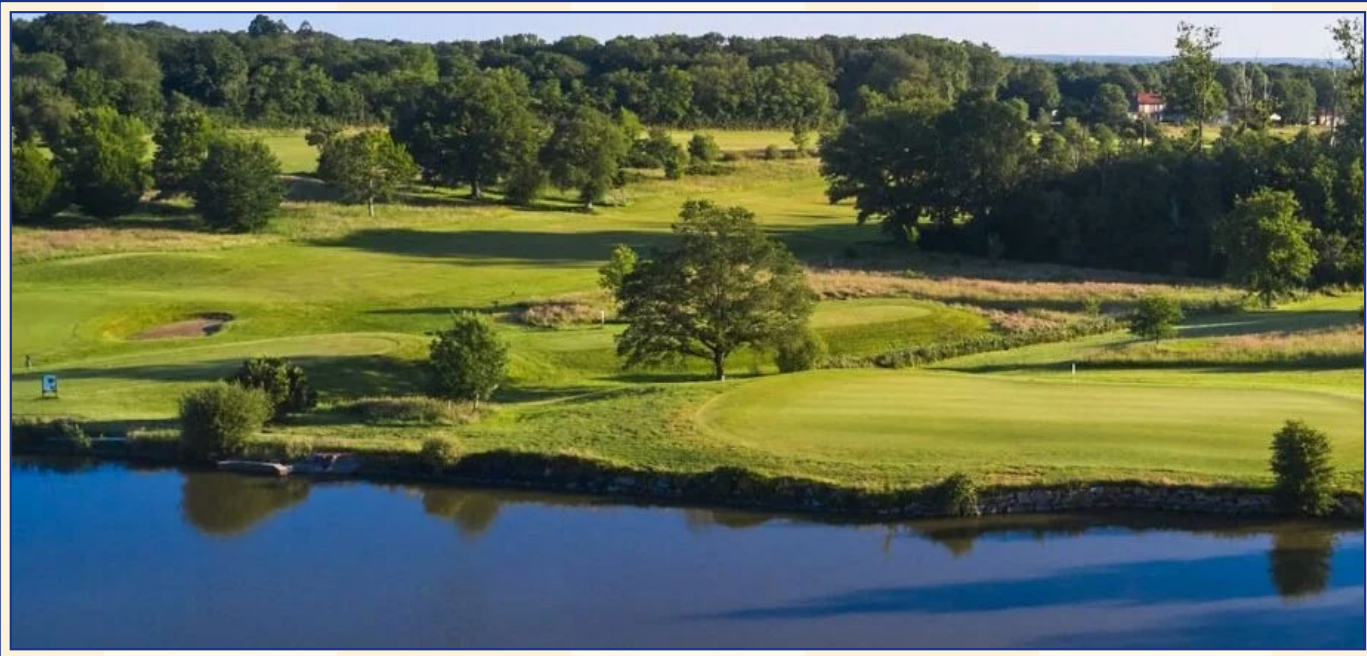




*LA PISCINE*  
THE POOL

















# CELEBRATE AND GATHER

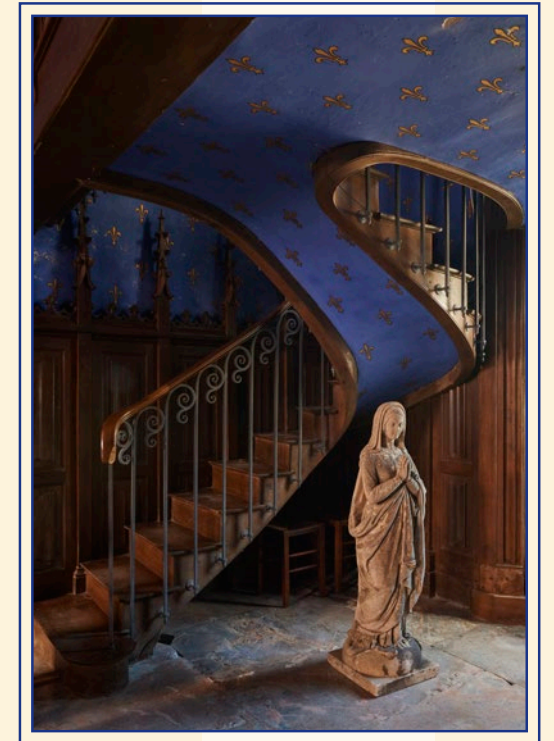


Château de Curzay offers a secluded atmosphere ideal for any intimate celebration, or friends and family gathering, while the grounds of the property are the perfect backdrop to any event.

Chic and glamorous or country and relaxed, the Château is the perfect setting for a wedding in total intimacy; the estate's magnificent tiny chapel, built in 1877 in Neo-gothic style, provides a magical ambience under the light of the stained glass windows.







*LA CHAPELLE*  
THE CHAPEL









HÔTEL  
ESÊNCIA

*CHÂTEAU DE CURZAY*